

Fix your Fireplace



WM XS Series

Remii
Electric Fireplaces

Content

- [How to replace tray light](#)
- [How to replace flame light](#)
- [How to replace flicker motor](#)
- [How to replace heating element](#)
- [How to replace the PCB board](#)
- [How to replace the signal receiver](#)
- [How to replace the touch control panel](#)

Replace the tray light

Replace tray light



Step 1 Push upward to take off the front glass.



Step 2

Unscrew 2 screws each on left and right side to take off 2 side back glass fixing bars.



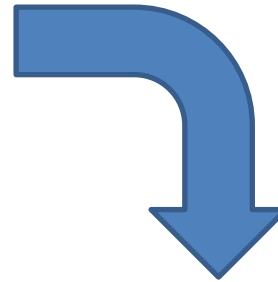
Step 3

Unscrew 1 screw each on left and right side



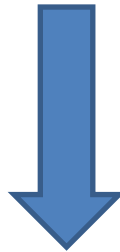
Step 4

Unbuckle the touch control panel and take off the touch control panel assembly.





Step 5



Take off the back glass



Step 6

Take off the tray glass.



Step 7

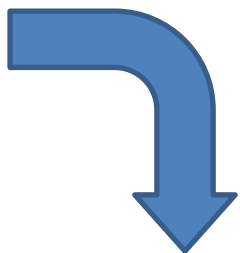
Unscrew the screws to disconnect the tray light assembly from the fireplace





Step 8

Unbuckle tray light to disconnect the tray light assembly from the fireplace, take it off and replace a new one.



Replace the flame light

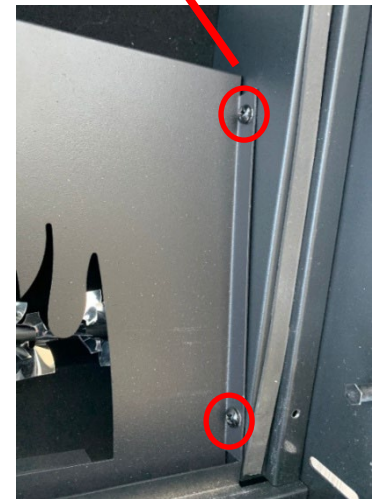
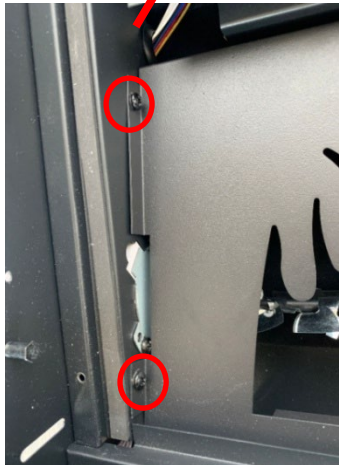
Follow STEP 1 to 5 in Replace the tray light, you come to here.





Step 1

Unscrew 2 screws each on left and right side to take off the flame stencil.



Step 2

The flame light is fixed at the back of the flame stencil. Now you can replace it with a new flame light.



Replace the flicker motor

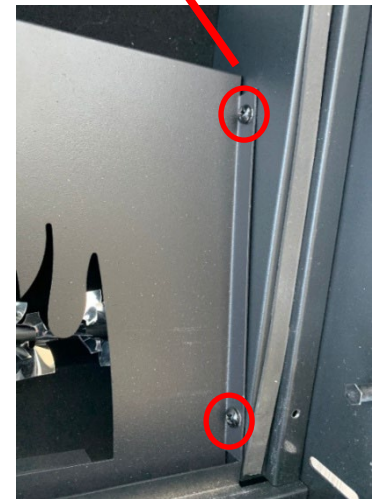
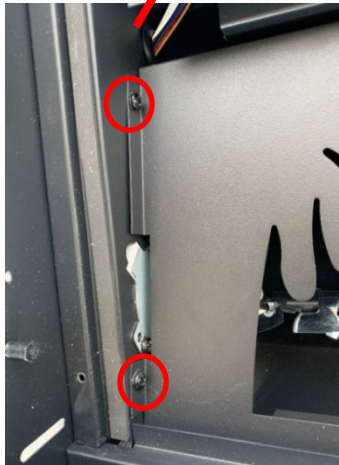
Follow STEP 1 to 5 in Replace the tray light, you come to here.





Step 1

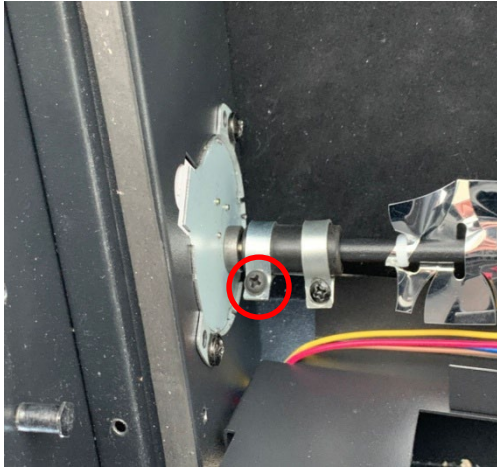
Unscrew 2 screws each on left and right side to take off the flame stencil.



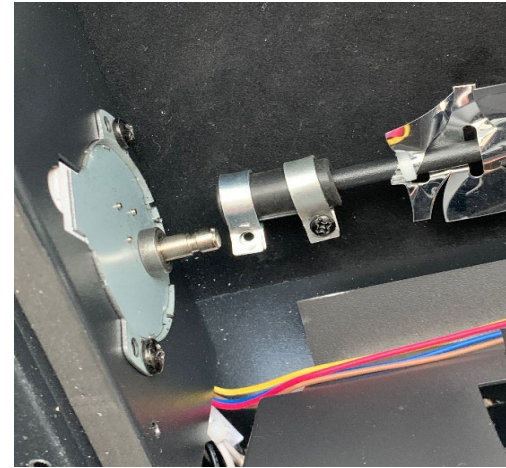


The flicker motor lies here

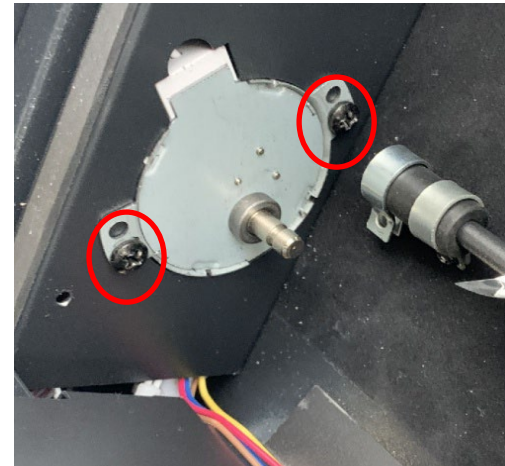
Step 2



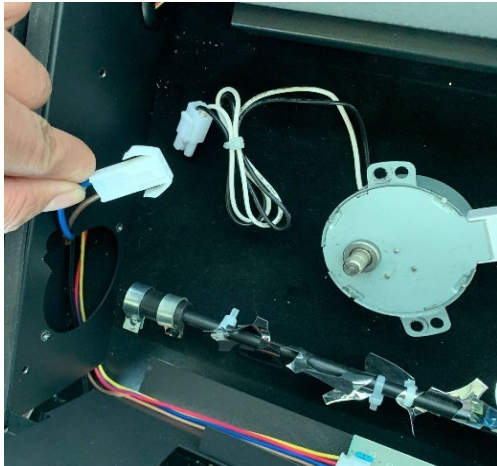
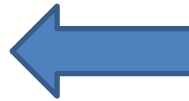
Unscrew the screw



Disconnect the motor
from the rod



Unscrew the screws
to take off the motor



Pull out the wiring and
unplug the motor

Replace the heating assembly

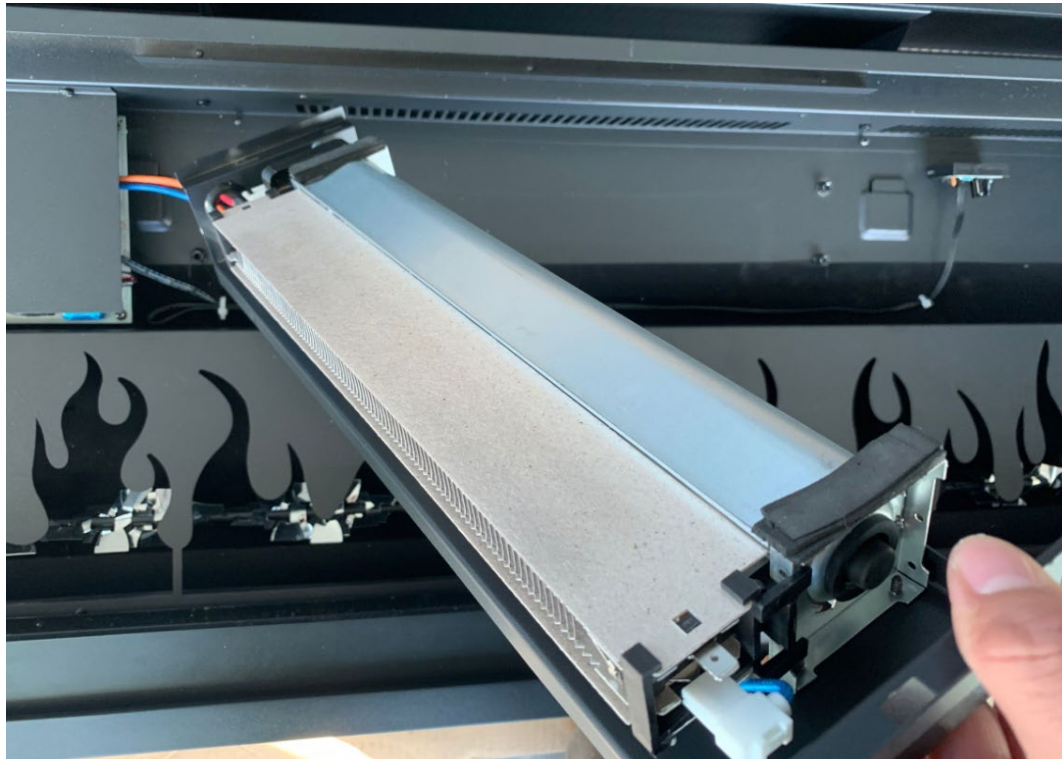
Follow STEP 1 to 5 in Replace the tray light, you come to here.



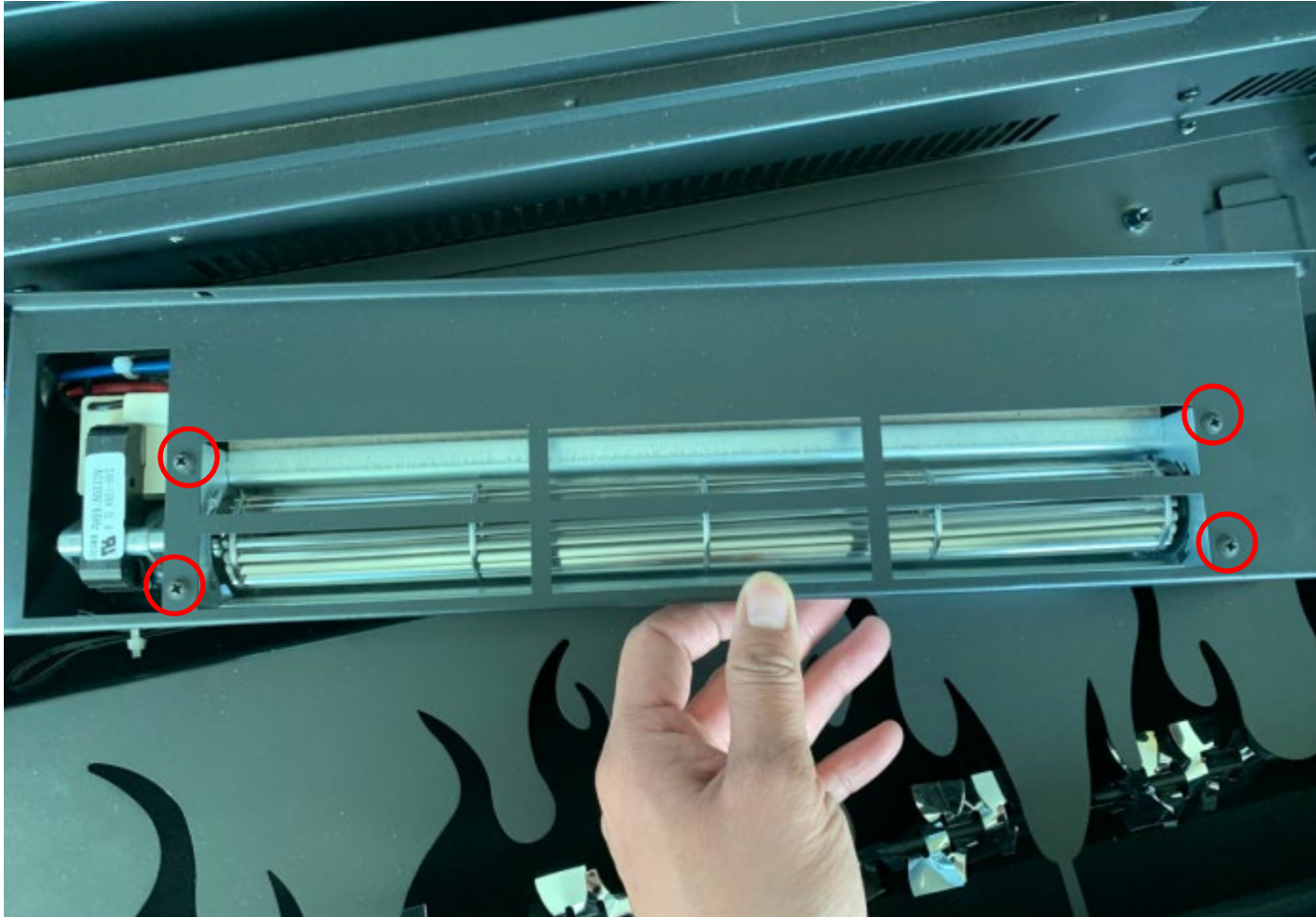
Step 1 Unscrew the screws to disconnect the heating assembly from the fireplace



When the screws are removed, you can take off the heating assembly



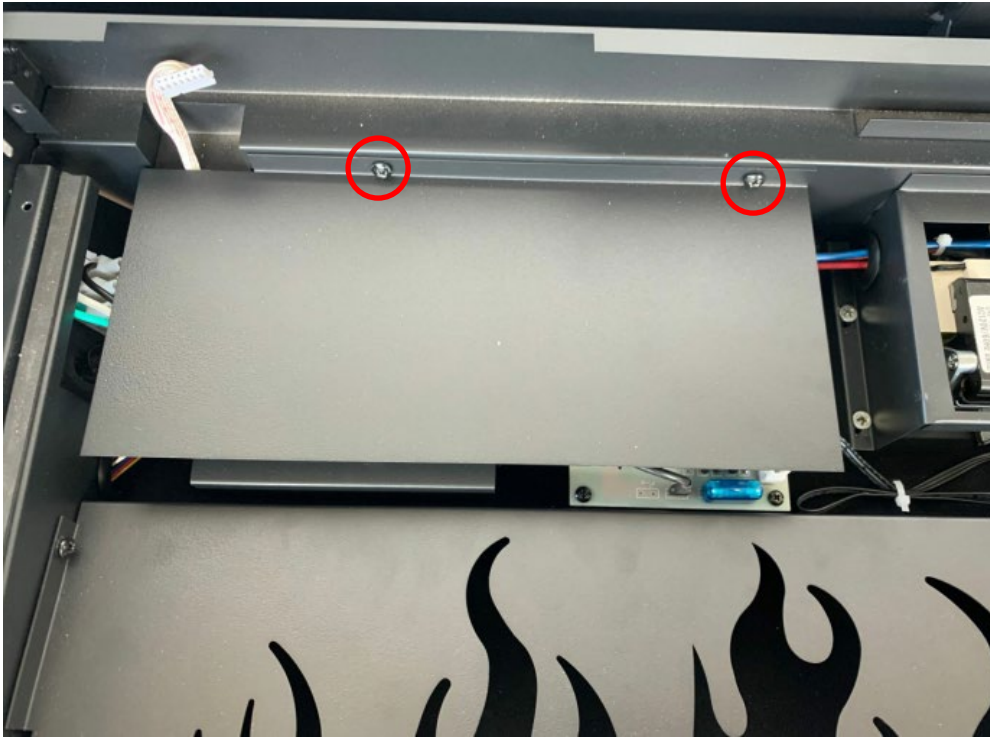
Step 2 Unscrew the screws to disconnect the heater from the heating assembly. Unplug to replace a new one.



Replace the PCB board

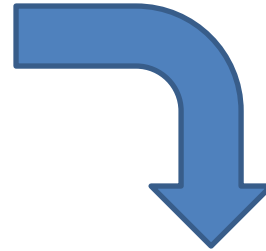
Follow STEP 1 to 5 in Replace the tray light, you come to here.



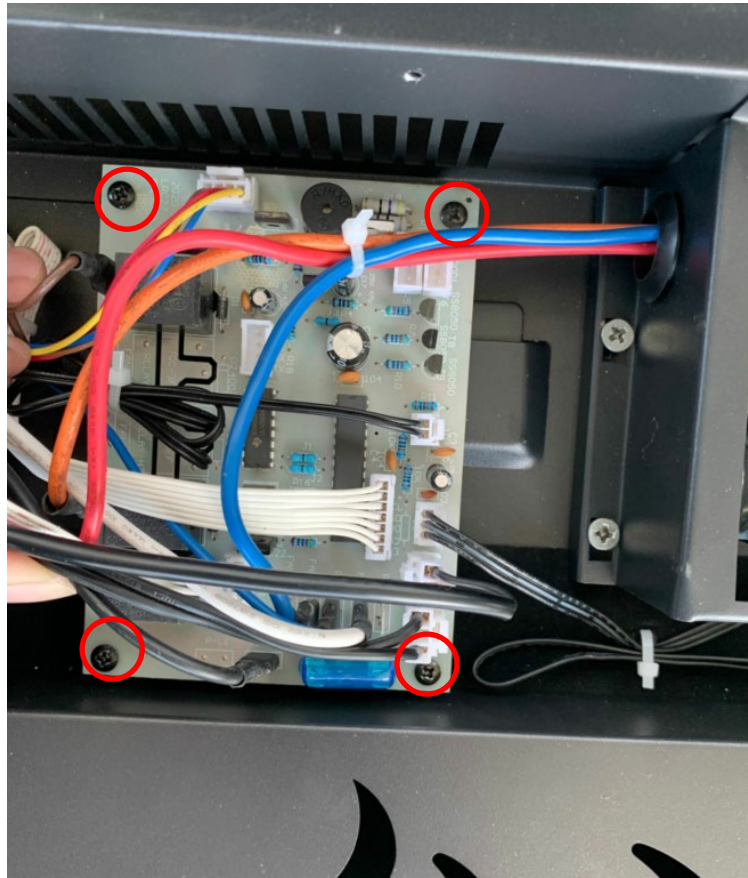


Step 1

Unscrew the screws to take off the PCB board protecting cover.



Step 2 Unscrew the screws to take off the PCB board and replace with it a new one.



Replace the signal receiver

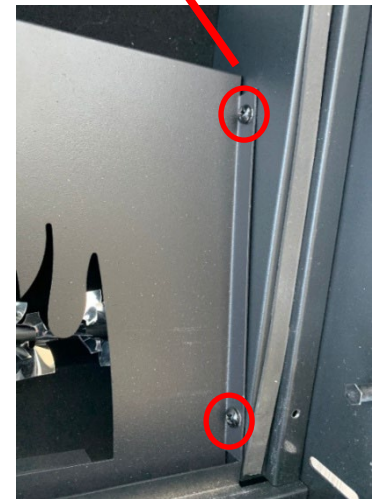
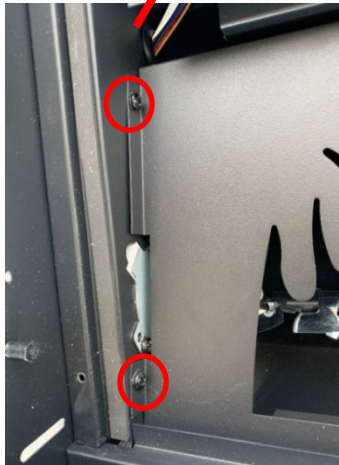
Follow STEP 1 to 5 in Replace the tray light, you come to here.



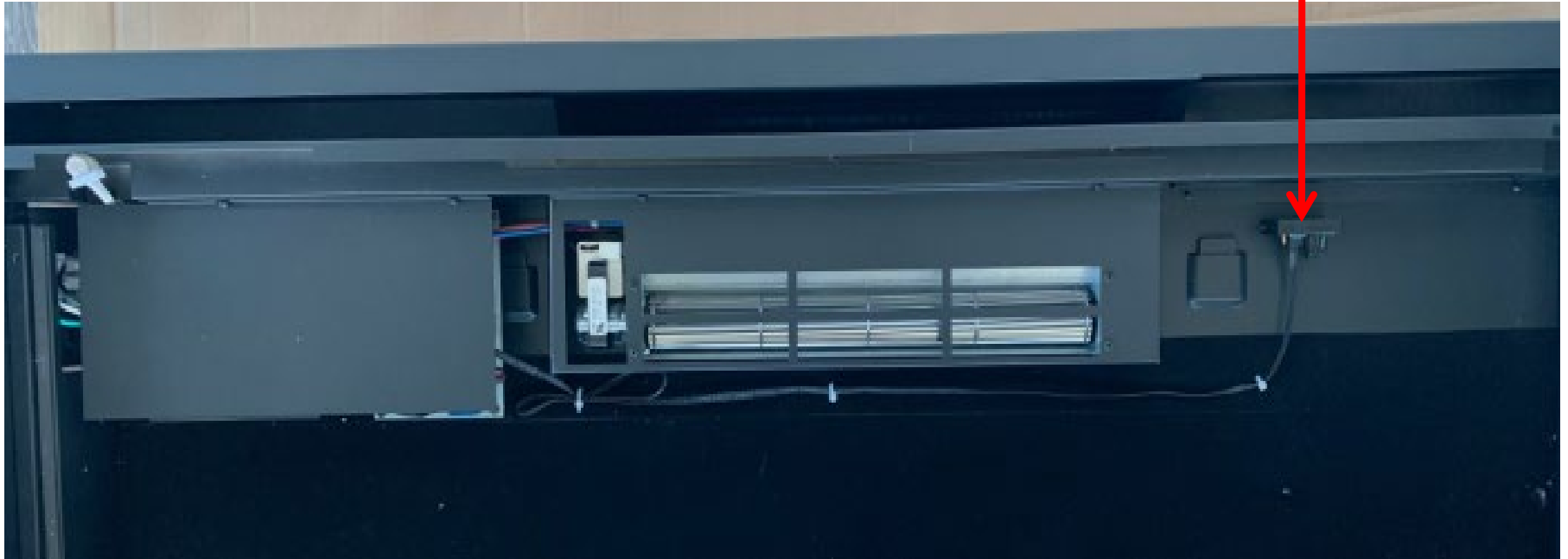


Step 1

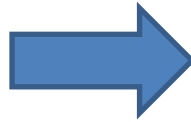
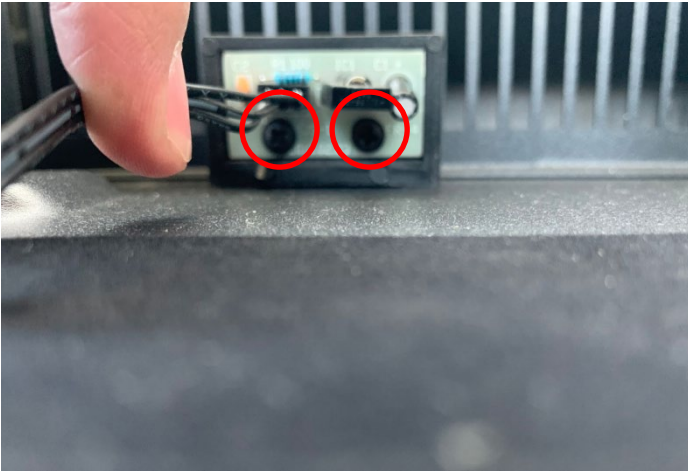
Unscrew 2 screws each on left and right side to take off the flame stencil.



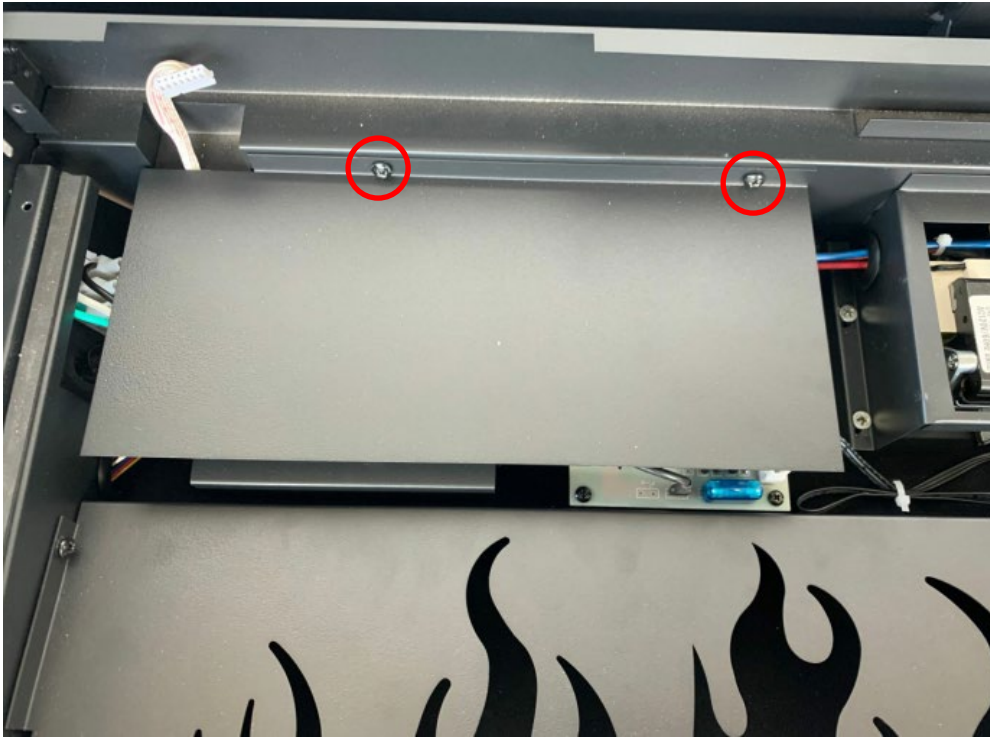
The signal receiver lies here



Step 3

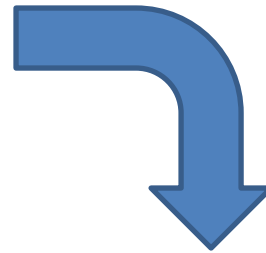


Unscrew the screws to take off the signal receiver.

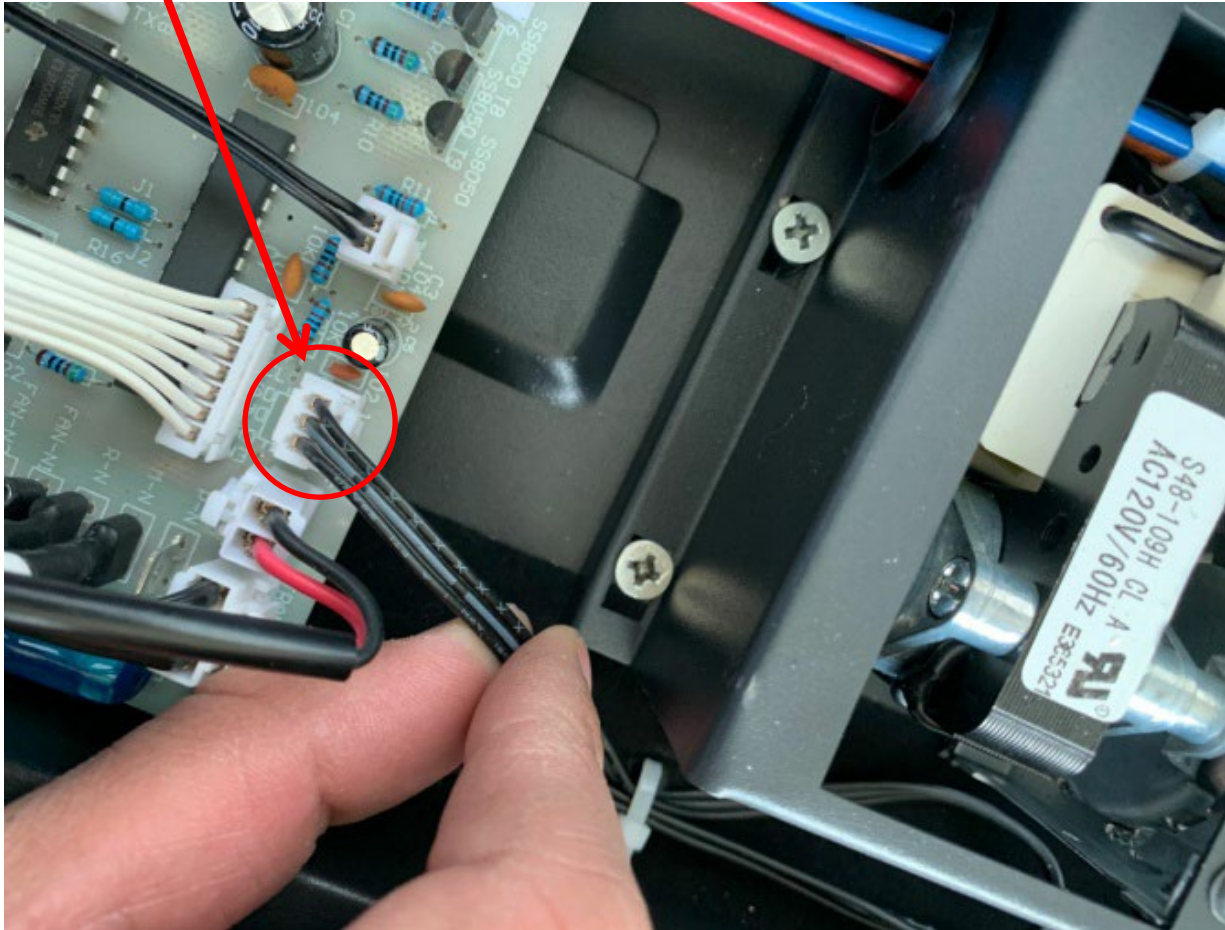


Step 4

Unscrew the screws to take off the PCB board protecting cover.



Step 5 Unplug and replace with it a new signal receiver



How to replace the touch control panel

Follow STEP 1 to 4 in Replace the tray light, you come to here.



Unscrew the screws to take the touch panel and replace it with a new one.